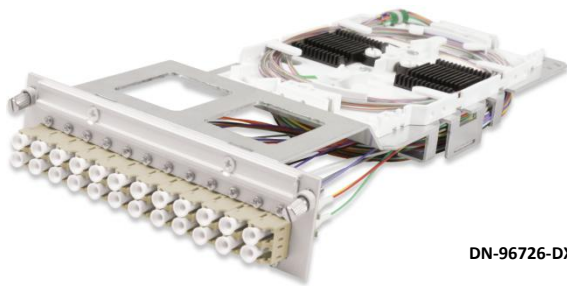


DIGITUS® Fiber Optic Compact Modules and Subrack



DN-96726-DX

✓ Compact Modules pre-assembled

✓ Also available as unequipped version

✓ Suitable for 483 mm (19") rack mount

✓ Easy installation

Abstract

DIGITUS® Fiber Optic Compact Modules and Subrack

Features - Subrack

- 483 mm aluminum angle- and connection rails
- Side panels made out of sheet steel
- Guide rail made out of plastic
- Suitable for 483 mm (19") mounting
- Suitable for an installation of maximum 12 compact modules (7DU)
- Dimensions (HxWxD): 133 (3U) x 483 (19") x 240 mm

Features - Compact Modules

- Available as pre-assembled or unequipped version
- Carrier plate: ALMg3 foiled, inclusive splicing lead
- Installation in 3U subrack
- Front panel: 3U/7DU with assembled couplers/blind stops
- With labeling strip for paper inlay
- Pigtailed: Assembled, remotely, color coded as per IEC 60304 and placed in the tray
- Strain relief via cable ties
- Dimensions (HxWxD): 128x35x250 mm
- Operating temperature: -20 °C up to +80 °C
- Storage temperature: -40 °C up to +90 °C

Optical Properties

IL width Multimode	max. 0.4 dB
IL width Singlemode	max. 0.5 dB (PC); max. 0.3 dB (APC)
RL width Multimode	min. 30 dB
RL width Singlemode	min. 40 dB (PC); min. 60 dB (APC)

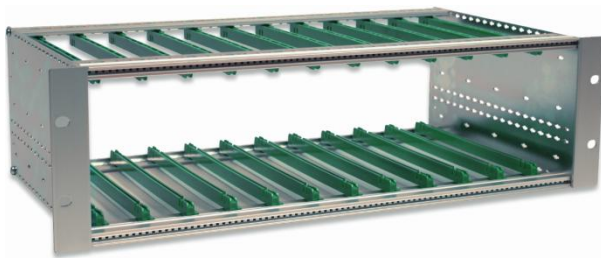
All values during assembly: IL as per IEC 61300-3-4; RL as per IEC 61300-3-6

Product Overview

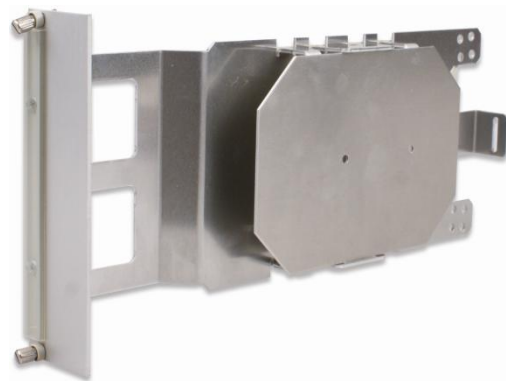
The DIGITUS® Fiber optic compact modules are pre-assembled, which means, the pigtailed are assembled, remotely, color coded as per IEC 60304 and placed in the tray. The front panel is equipped with couplers/blind stops and has a mounting height of 3U (also available as unequipped version). The installation takes place in a subrack (product number "DN-96710").

Product Images

Subrack - DN-96710



Compact Module, unequipped - DN-96718-SX-UE



Product Number Information - Compact Modules

Product Number	Assembly			Coupler		Plug
	Couplers	Pigtails	Fiber type	Color	Sleeve	Polish
DN-96718-SX	8x ST-SX	8x ST	G50/125 μ - OM2	Metal	PHBr	PC
DN-96718-SX/3			G50/125 μ - OM3		PHBr	PC
DN-96718-SX/4			G50/125 μ - OM4		Ceramic	PC
DN-96718-SX-G62			G62,5/125 μ - OM1		PHBr	PC
DN-96718-SX/9			E9/125 μ - OS2		Ceramic	PC
DN-96726-DX	6x SC-DX	12x SC	G50/125 μ - OM2	Beige	PHBr	PC
DN-96726-DX/3			G50/125 μ - OM3	Aqua	PHBr	PC
DN-96726-DX/4			G50/125 μ - OM4	Violet	Ceramic	PC
DN-96726-DX-G62			G62,5/125 μ - OM1	Beige	PHBr	PC
DN-96726-DX/9			E9/125 μ - OS2	Blue	Ceramic	PC
DN-96726-DX/9-APC			E9/125 μ - OS2	Green	Ceramic	APC
DN-967312-DX	12x LC-DX	24x LC	G50/125 μ - OM2	Beige	Ceramic	PC
DN-967312-DX/3			G50/125 μ - OM3	Aqua	Ceramic	PC
DN-967312-DX/4			G50/125 μ - OM4	Violet	Ceramic	PC
DN-967312-DX-G62			G62,5/125 μ - OM1	Beige	Ceramic	PC
DN-967312-DX/9			E9/125 μ - OS2	Blue	Ceramic	PC
DN-967312-DX/9-APC			E9/125 μ - OS2	Green	Ceramic	APC

Subrack

DN-96710 DIGITUS[®] 19" subrack for 12x 7DU compact modules, 3U, steel sheet sidepanel, 133x483x240 mm (HxWxD)

Compact Modules, unequipped

DN-96700 DIGITUS[®] Fiber Optic Compact Module, unequipped, with blind plate, for 3U subrack, 128x35x250 mm (HxWxD)

DN-96718-SX-UE DIGITUS[®] Fiber Optic Compact Module, unequipped, for 8x ST Simplex, for 3U subrack, 128x35x250 mm (HxWxD)

DN-967312-DX-UE DIGITUS[®] Fiber Optic Compact Module, unequipped, for 12x LC Duplex, for 3U subrack, 128x35x250 mm (HxWxD)

DN-967E2012-SX-RM-UE DIGITUS[®] Fiber Optic Compact Module, unequipped, for 12x E2000 Simplex, R&M, for 3U subrack, 128x35x250 mm (HxWxD)

DN-967E2012-SX-HS-UE DIGITUS[®] Fiber Optic Compact Module, unequipped, for 12x E2000 Simplex, H&S, for 3U subrack, 128x35x250 mm (HxWxD)

DN-967E206-DX-RM-UE DIGITUS[®] Fiber Optic Compact Module, unequipped, for 6x E2000 Duplex, R&M, for 3U subrack, 128x35x250 mm (HxWxD)

DN-967E206-DX-DM-UE DIGITUS[®] Fiber Optic Compact Module, unequipped, for 6x E2000 Duplex, Diamond, for 3U or 1U subrack, 128x35x250 mm (HxWxD)

DN-96726-DX-UE DIGITUS[®] Fiber Optic Compact Module, unequipped, for 6x SC Duplex, for 3U or 1U subrack, 128x35x250 mm (HxWxD)

DN-967312-DX-SNAP-UE DIGITUS[®] Fiber Optic Compact Module, unequipped, for 12x LC Duplex, for 3U subrack, (Snap-In), 128x35x250 mm (HxWxD)